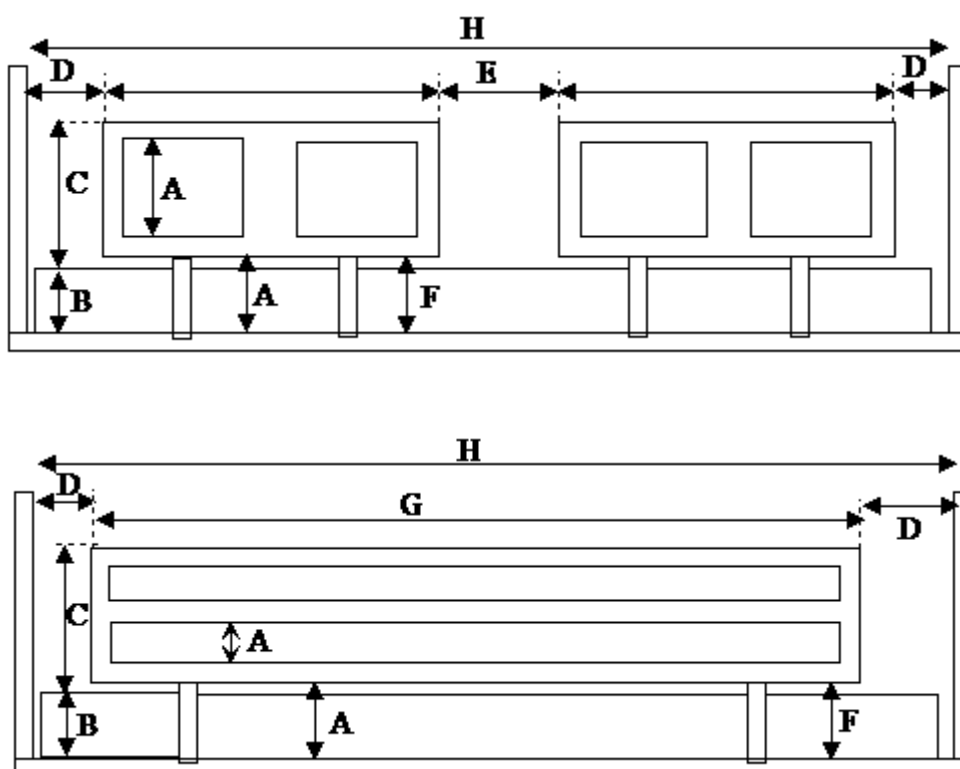


## Dimensional requirements of bed rails (from BS EN 1970:2000)



Designator	Description	Requirement mm	
A	The greatest dimension in at least one direction between elements inside of the perimeter of the side rail/grab handle in all normal use positions	$A \leq 120$	
B	Thickness of normal use mattress as specified by the manufacturer without compression	As specified by the manufacturer	
C	Height of the top of the side rail above the mattress without compression and with the bed board in flat position	$C \geq 220$	
D	Distance between the head end panel/foot end panel/accessories and the side rail grab handle with the bed board in flat position. Applies also if the end panels are extended.	$D \leq 60$ or $D \geq 250$	
E	Distance between segmented side rails with bed board in flat position	$E \leq 60$ or $250 \leq E \leq 400$	
F	The greatest dimension in at least one direction of any accessible opening below the side rail, either	If D or E $\geq 250$ then: $F \leq 60$	If D or E $\leq 60$ then: $F \leq 120$
G	The length of side rail(s)	$G \geq \frac{2}{3} H$	
H	The distance between the head end panel and the foot end panel without extensions of the panels.	No requirements	